

Assetz



RERA REGN NO PRM/KA/RERA/1251/309/AG/180804/001069



CGI Artist's Impression



THESE LUXURY HOMES BY THE
LAKE ARE DESIGNED TO
REDESIGN THE FUTURE.

STUDIO, 2 & 3 BHK
OFF HOSUR MAIN ROAD (BEGUR LAKEFRONT)

CARBON HEALING HOMES 5

ACRES OF PARK

SMART HOMES

AVG. 70% CARPET AREA EFFICIENCY

URBAN AMENITIES



BEGUR LAKE

PHASE 1B

PHASE 1A

PHASE 2

TOTAL GREEN SPACE (8.5 ACRES)
WATERFRONT PARK (5 ACRES)

CGI Artist's Impression

THERE'S A WHOLE LOT OF BEAUTIFUL IN THE BLUEPRINT.

Masterplan

- | | | |
|------------------------|------------------------------------|---------------------------|
| 1. Main entry/ exit | 8. Indoor badminton | 15. Tennis court |
| 2. Visitors carparking | 9. Swimming pool | 16. Basketball court |
| 3. Security checkpoint | 10. Organic garden/ orchard | 17. Beachfront volleyball |
| 4. Basement entry | 11. Wooded area (camping/ bonfire) | |
| 5. Basement exit | 12. Children's play area | |
| 6. Clubhouse - 1 | 13. Skating rink | |
| 7. Clubhouse - 2 | 14. Futsal court | |



Note: The render is conceptual and is proposed for illustrative purposes only. The orientation, size, and design of the amenities will be subject to change as per construction requirements.



CGI Artist's Impression

THERE'S ROOM FOR BOTH QUIET MINDS AND WILD HEARTS.

From leisurely strolls under leafy trees to impromptu skits at the outdoor amphitheatre, your new home has something for everyone.

Common Amenities

- Swimming pools
- Skating rink*
- Futsal court*
- Tennis court*
- Basketball court*
- Beach volleyball*
- Provision for organic garden/ orchard*
- Wooded area with provision for camping/ bonfire pits*
- Children's play area*
- Pet corner**

Clubhouse Amenities

- Gymnasium
- Fitness studio
- Indoor badminton
- Provision for creche
- Indoor games
- Multi-purpose hall

*Amenities will be shared between Phase - 1 & 2.

**Amenity will be shared between Phase - 1 & 2 and will be handed over with Phase 2.



CGI Artist's Impression

WE REMEMBERED ALL THE FORGETTABLE DETAILS THAT MAKE A HOME UNFORGETTABLE.

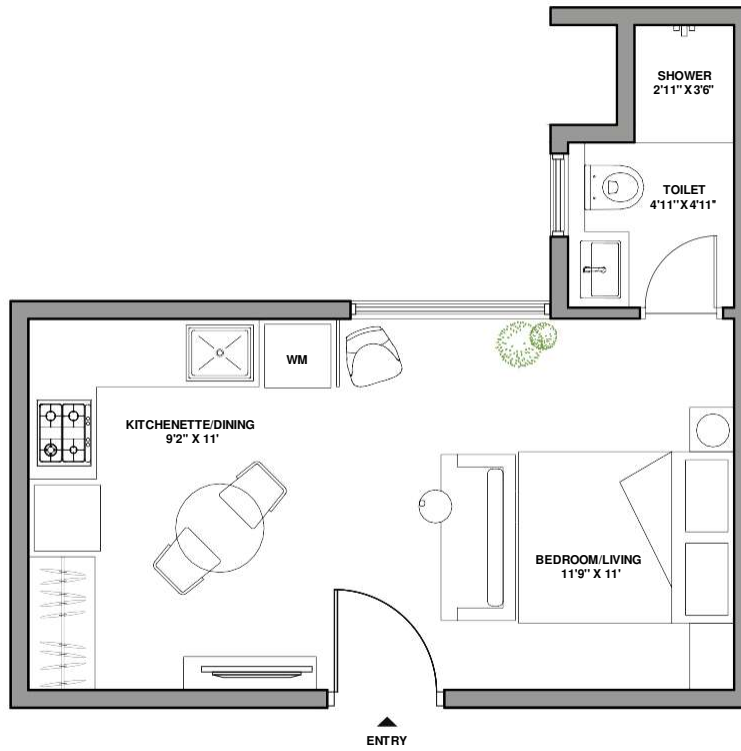
There are 1354* apartments.
You can choose from studios, 2 BHKs and 3 BHKs.
Each is designed for pleasure and serenity,
as well as efficiency.

Studio

Carpet Area as per RERA 265.66 SQ FT

CREDAI Carpet Area 266.62 SQ FT

SBUA 376 SQ FT

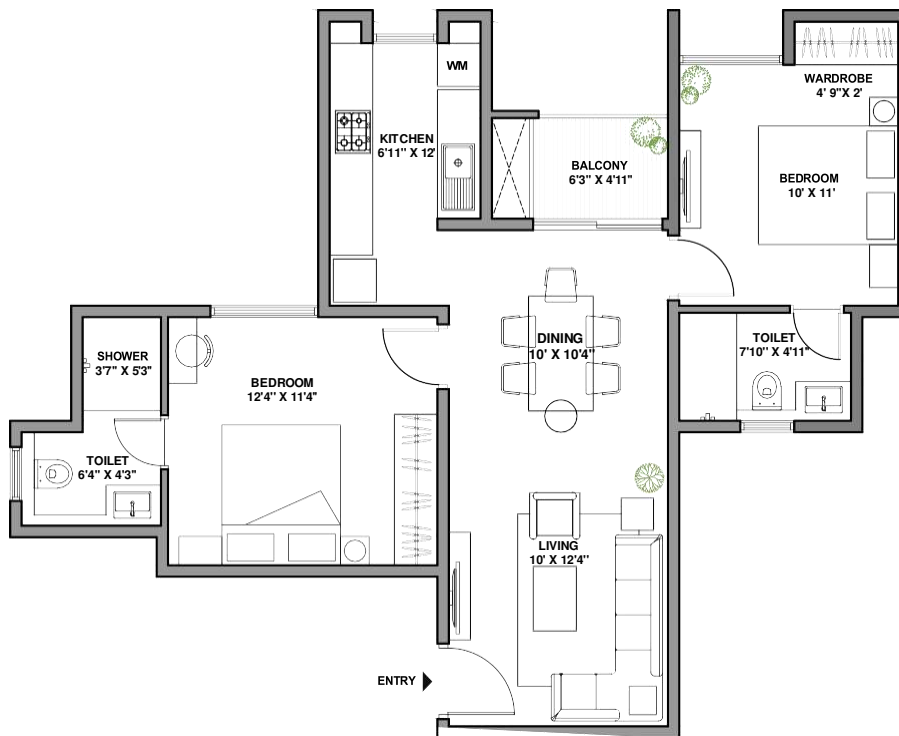


2 BHK

Carpet Area as per RERA 669.09 SQ FT

CREDAI Carpet Area 688.14 SQ FT

SBUA 983 SQ FT



3 BHK

Carpet Area as per RERA 807.84 SQ FT

CREDAI Carpet Area 815.27 SQ FT

SBUA 1165 SQ FT



CARBON HEALING HOMES

~79% water savings | Zero
waste to landfill | Renewable
energy | Ample green spaces

LUXURY specced HOMES

Best in class fittings
and fixtures

smart HOMES

Automated lighting and
geysers | Motion sensor
lighting | Gas leak detection

CARPENTRY FREE HOMES

Pre-fitted wardrobes,
vanity and kitchen
(Optional)

&HOMES

Homes that eliminate 'or'
from your vocabulary and replace
it with '&'. Homes that give you
everything you dreamed of and
more.

SPACE EFFICIENT HOMES

Avg. 70% floor plan efficiency
| Minimal redundant spaces

OUTDOOR connected HOMES

~85% open spaces |
Urban amenities

Quality BUILT homes

Stringent construction
practices | Partnered with
the best in the industry

.v a a s t u . COMPLIANT HOMES

Designed according to scientific
principles to maintain harmony
and balance



CGI Artist's Impression

This is a

CARBON HEALING HOME

Every carbon healing home is designed to give back to the earth through four very special features.

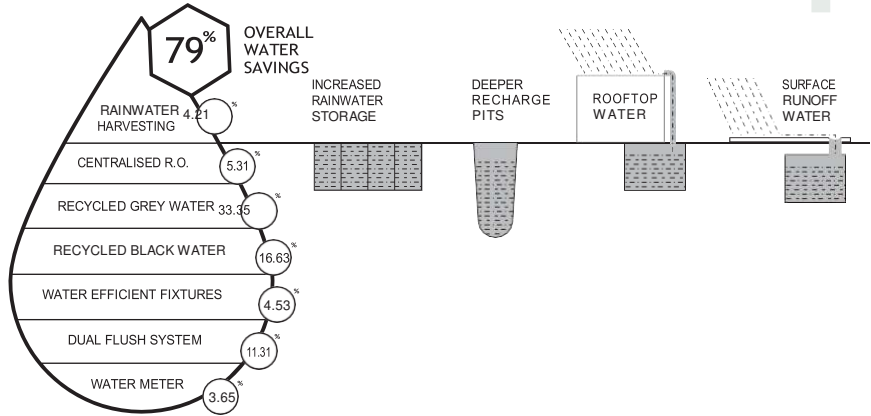
Disclaimer: The information contained in this section is for general information only. The information is provided by our 'Sustainability Services Consultants' and while we endeavor to keep the information up to date and correct, we make no representations or warranties of any kind, express or implied, about the completeness, accuracy, reliability, suitability or availability with respect to the information or related graphics. Any reliance you place on such information is therefore strictly at your own risk.



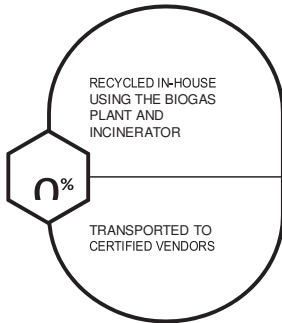
SPONGE EFFECT

Designed to utilize every drop of water

These homes save 150 KL of water every single day - which is equal to the daily demand of 1400 people. In a year, they save 55 million litres.



1



ZERO OUT

Zero waste to landfill

Responsible waste management ensures that 1.34 tonnes of waste are diverted from the landfill every day. The biogas digester uses 615 kg of waste to generate 100kWh units of electricity.

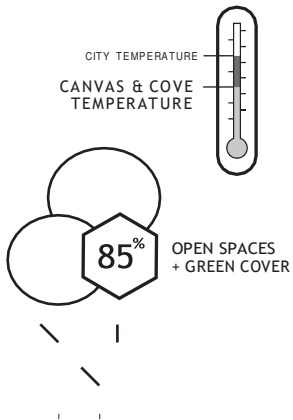
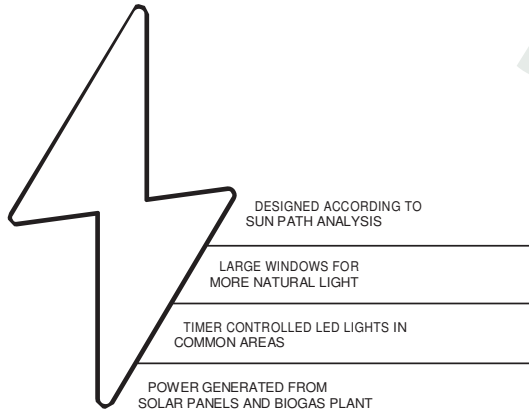
2



SMART POWER

Total utilisation of renewable energy sources

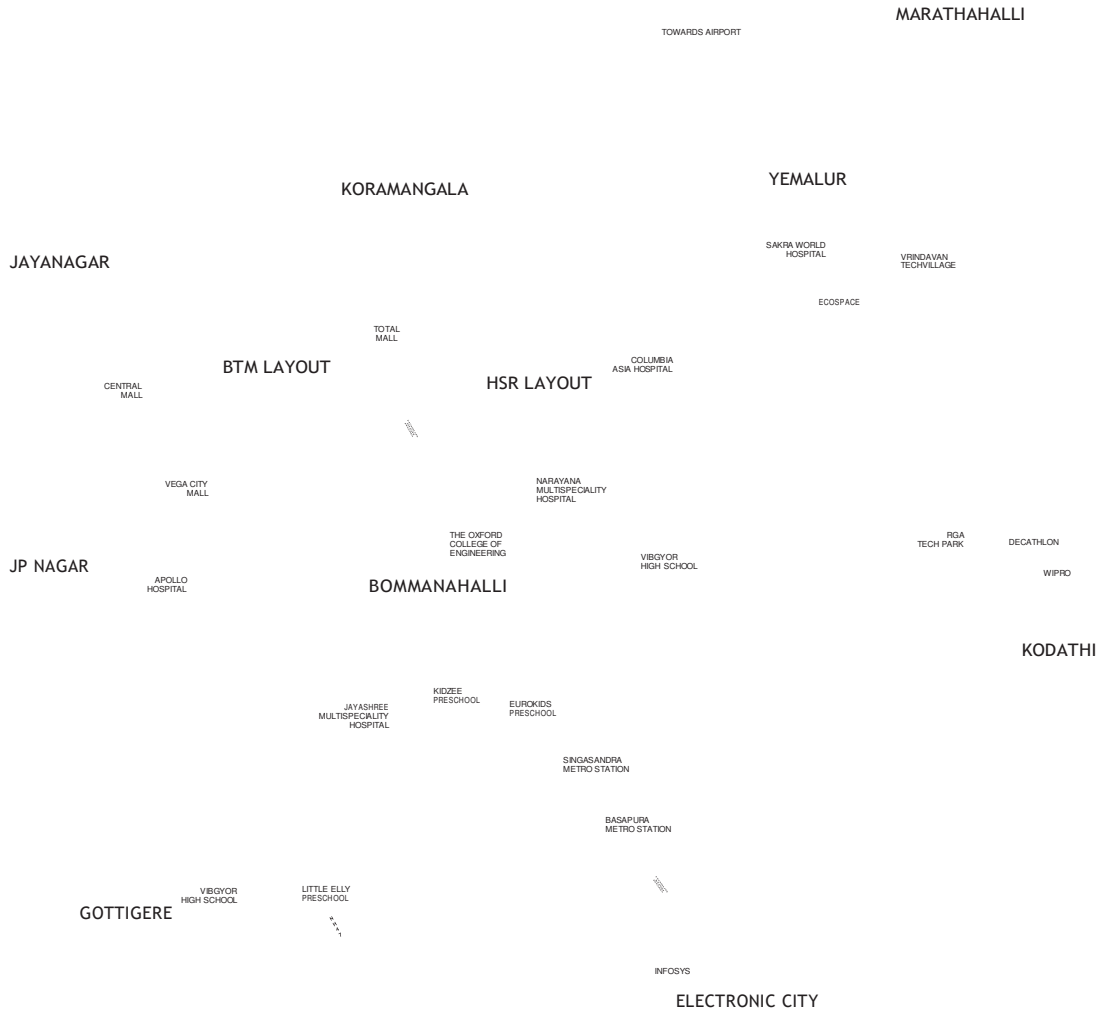
Here, power is generated from both solar panels and a biogas plant. In addition, the project is designed according to sun path analysis and to maximise natural light for less dependency on the artificial.



CLIMATE CAPSULE

Higher green cover for lower temperatures

With acres of greenery, Canvas & Cove also has a considerably lower temperature than the city beyond its walls.



Map not to scale

THE ROAD HOME IS TOO SHORT FOR LONG DRIVES.

Canvas & Cove is strategically located to be close to well, everything. Just 2.5 km from Hosur Main Road, near the city's best schools, hospitals, malls, and IT parks.

Important distances

- 03 km from Basapura Road Metro Station
- 04 km from Singasandra Metro Station
- 06 km from Electronic City
- 07 km from Koramangala
- 08 km from JP Nagar
- 09 km from Jayanagar
- 10 km from Sarjapur
- 15 km from MG Road
- 15 km from Indiranagar
- 48 km from the Airport



Retail

- 07 km - Total Mall
- 09 km - Vega City Mall
- 10 kms - Central Mall
- 11 kms - Decathlon



Schools & Colleges

- 01 km - Eurokids Preschool

- 02 km - Little Elly Preschool
- 03 km - Kidzee Preschool



Hospitals

03 km - Jayashree Multispeciality Hospital
06 km - Narayana Multispeciality Hospital
07 km -

Apollo Hospital
09 km - Columbia Asia Hospital

▲ 07 km - Infosys
12 km - Wipro
13 km - RMZ Ecospace

IT Parks

04 km - Bangalore Culinary Institute
04 km - Oxford College
06 km - Vibgyor High School
14 km - RGA Tech Park
14 km - Vrindavan TechVillage

