

# TYPICAL FLOOR PLAN Tower J (Amethyst)

2 BHK 3 BHK

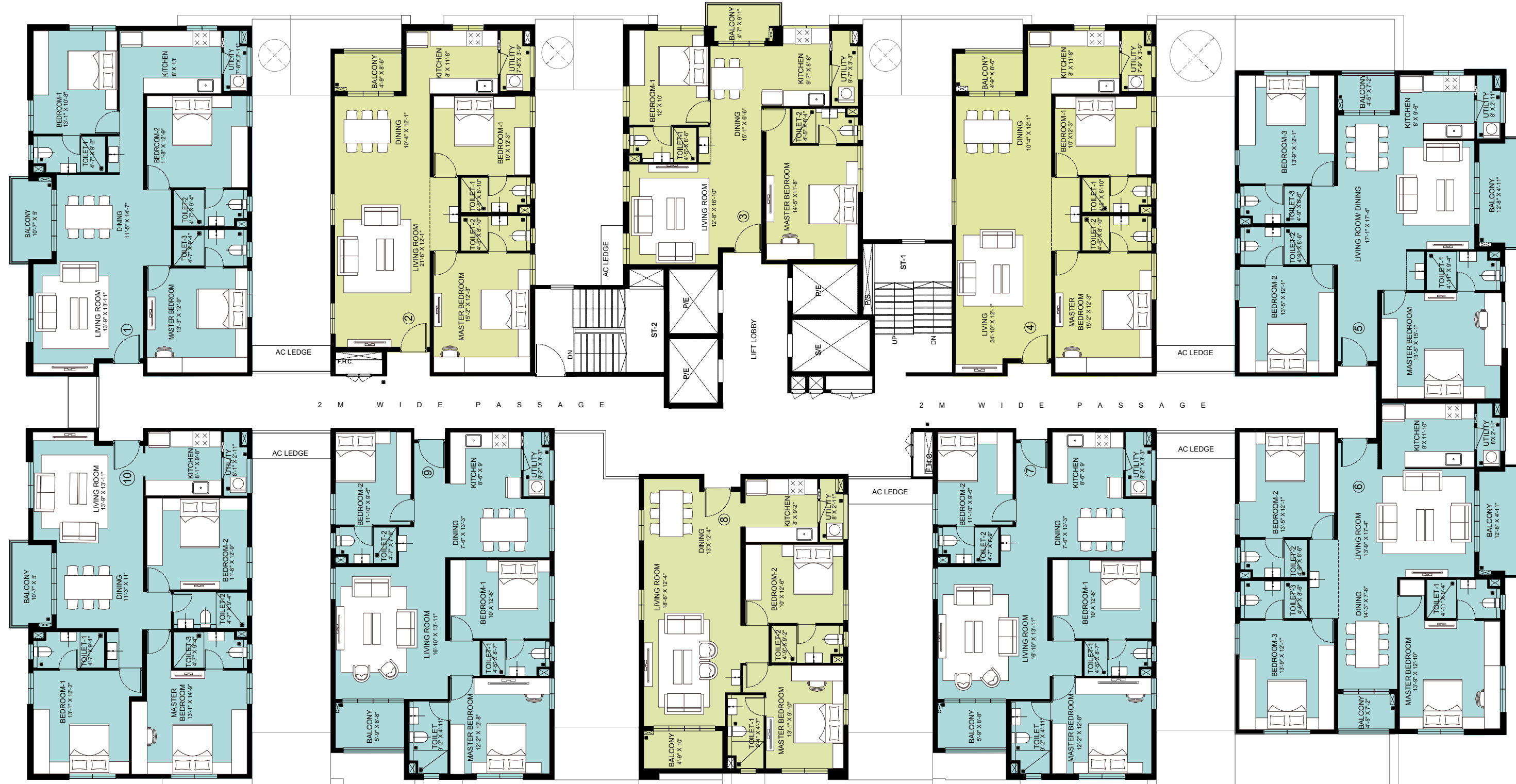
Unit 1 - 3 BHK  
1,638 sft.

Unit 2 - 2 BHK  
1,392 / 1,506 sft.

Unit 3 - 2 BHK  
1,214 / 1,286 sft.

Unit 4 - 2 BHK  
1,429 / 1,562 sft.

Unit 5 - 3 BHK  
1,794 / 1,977 sft.



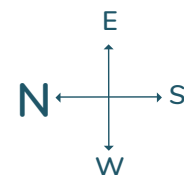
Unit 10 - 3 BHK  
1,638 / 1,730 sft.

Unit 9 - 3 BHK  
1,568 / 1,665 sft.

Unit 8 - 2 BHK  
1,286 / 1,385 sft.

Unit 7 - 3 BHK  
1,568 / 1,665 sft.

Unit 6 - 3 BHK  
1,799 / 1,976 sft.



# TYPICAL FLOOR PLAN Towers K (Aquamarine), L (Opal) & N (Ruby)

Unit 6 : 3 BHK  
1800 - 1978 sft.

Unit 7 : 3 BHK  
1568 - 1663 sft.

Unit 8 : 2 BHK  
1294 - 1396 sft.

Unit 9 : 3 BHK  
1568 - 1666 sft.

Unit 10 : 3 BHK  
1638 - 1731 sft.



Unit 5 : 3 BHK  
1795 - 1979 sft.

Unit 4 : 2 BHK  
1430 - 1562 sft.

Unit 3 : 2 BHK  
1208 - 1282 sft.

Unit 2 : 2 BHK  
1392 - 1507 sft.

Unit 1 : 3 BHK  
1638 sft.

