



AREA STATEMENT

Flat No.	Carpet Area	Balcony	Ex.Wall	Builtup Area	SBUA
A1	1022	178	59	1259	1675
A2	801	175	52	1028	1370
A3	710	170	54	934	1245
A4	1034	169	60	1264	1685
A5	1018	171	60	1250	1665
A6	745	142	55	942	1255
A7	851	134	54	1039	1380
A8	1020	180	59	1259	1675



3BHK - East Facing | 1685 Sq.ft.

3BHK - West Facing | 1665 Sq.ft.

2BHK - East Facing | 1245 Sq.ft.

2BHK - North Facing | 1255 Sq.ft.

2.5BHK - East Facing | 1370 Sq.ft.

2.5BHK - West Facing | 1380 Sq.ft.

3BHK - East Facing | 1675 Sq.ft.

3BHK - North Facing | 1675 Sq.ft.

GOLDEN GATE



AREA STATEMENT

Flat No.	Carpet Area	Balcony	Ex.Wall	Builtup Area	SBUA
C1	1021	184	60	1265	1685
C2	761	130	50	940	1250
C3	732	126	48	906	1205
C4	789	195	50	1031	1375
C5	836	141	57	1034	1375
C6	758	95	52	906	1205
C7	792	95	53	940	1250
C8	1018	187	60	1265	1685



LIBERTY

N



AREA STATEMENT

Flat No.	Carpet Area	Balcony	Ex.Wall	Builtup Area	SBUA
D1	831	169	51	1051	1400
D2	829	168	54	1051	1400
D3	686	101	46	834	1110
D4	653	134	46	834	1110

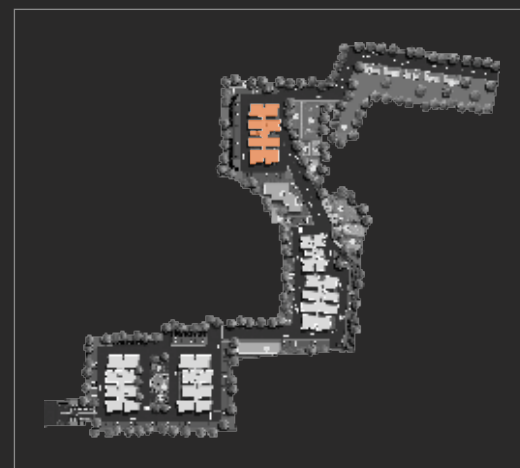


SARGADA



AREA STATEMENT

Flat No.	Carpet Area	Balcony	Ex.Wall	Builtup Area	SBUA
E1	1020	185	60	1265	1685
E2	732	126	48	906	1205
E3	732	126	48	906	1205
E4	909	146	59	1115	1485
E5	919	143	58	1119	1490
E6	650	120	47	818	1090
E7	763	97	51	909	1210
E8	1018	186	60	1265	1685



3BHK - East Facing | 1485 Sq.ft.

3BHK - West Facing | 1490 Sq.ft.

2BHK - East Facing | 1205 Sq.ft.

2BHK - North Facing | 1090 Sq.ft.

2BHK - East Facing | 1205 Sq.ft.

2BHK - North Facing | 1210 Sq.ft.

3BHK - East Facing | 1685 Sq.ft.

3BHK - West Facing | 1685 Sq.ft.

6'6" WIDE CORRIDOR

LIFT

FIRE HYDRANT

Labels in floor plans include: TOILET, BEDROOM, DINING, DRAWING, KITCHEN, WASH, BALCONY, LOBBY, and WASH/UTILITY.

A1 - 3BHK - East Facing **1675sft**



A3 - 2BHK - East Facing **1245sft**



A5 - 3BHK - West Facing **1665sft**



A6 - 2BHK - North Facing **1255sft**



A8 - 3BHK - North Facing **1675sft**



C1 - 3BHK - East Facing **1685sft**

C2 - 2BHK - East Facing 1250sft



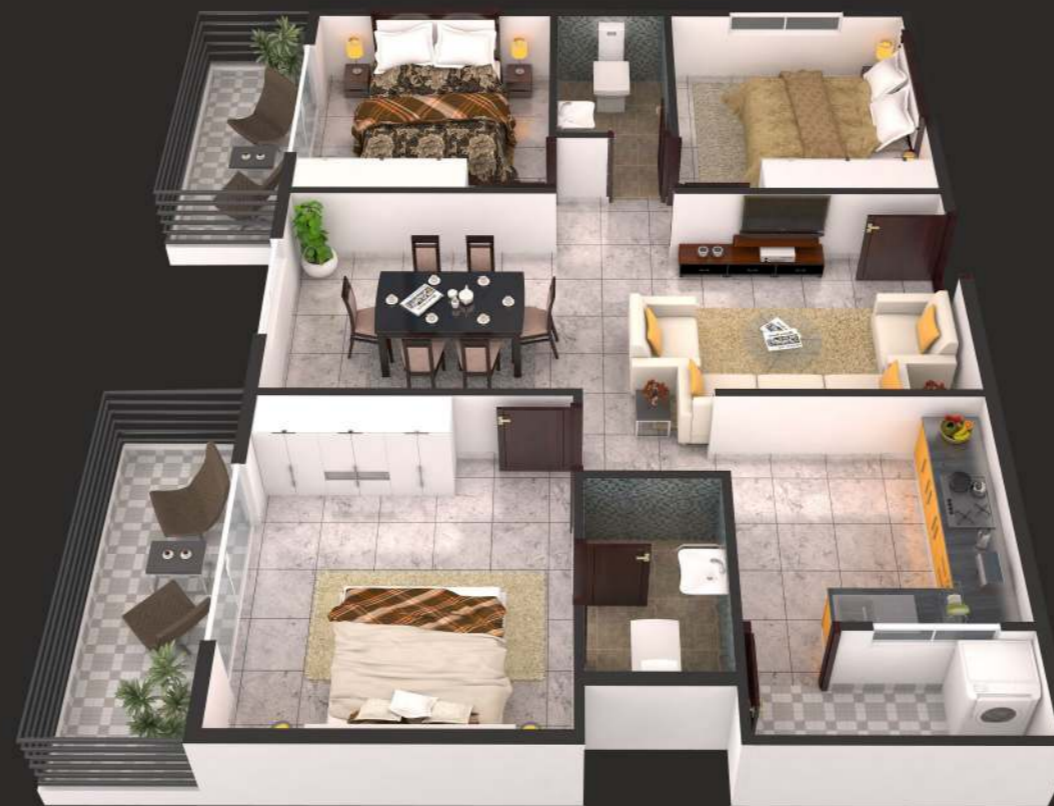
C4 - 2.5BHK - East Facing 1375sft



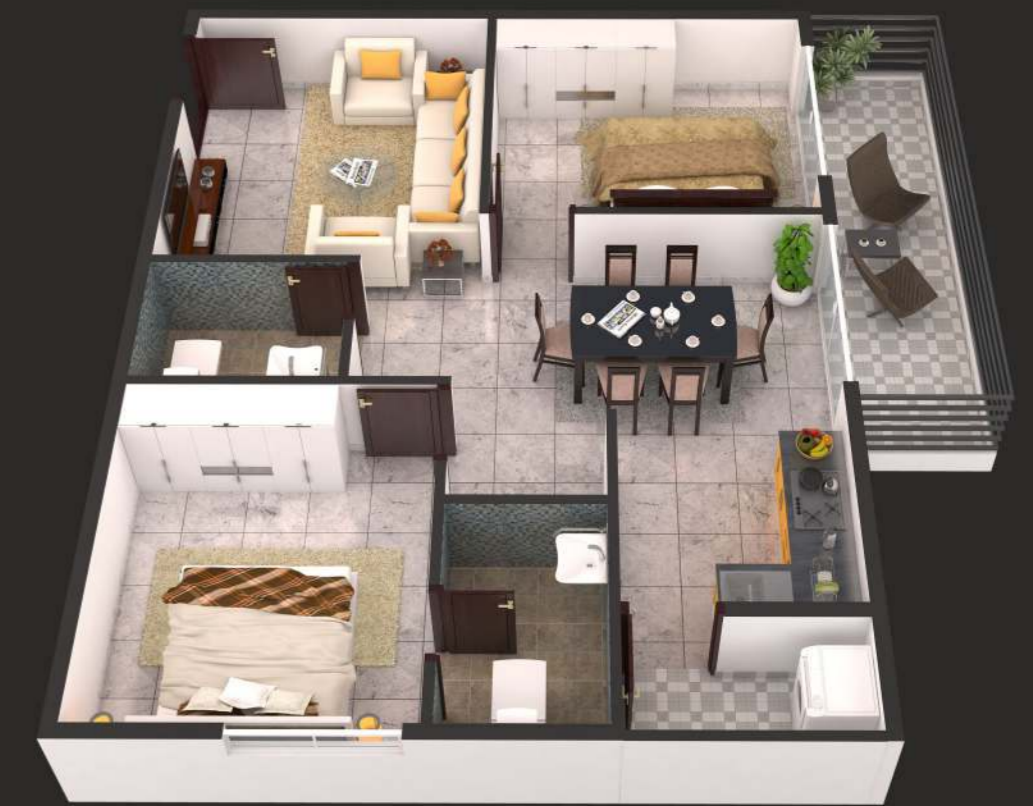
C6 - 2BHK - West Facing 1205sft



C8 - 3BHK - West Facing 1685sft



D1 - 2.5BHK - East Facing 1400sft



D4 - 2BHK - West Facing 1110sft